



Nuusbrief: Nasionale Veestatistiek

Van: Baldwin Netshifhefhe **Direktoraat:** Statistiek en Ekonomiese Analise
Tel: 012 319 8043 **Faks:** 012 319 8035/1 **E-pos:** BaldwinN@dalrrd.gov.za / Selebogol@dalrrd.gov.za

Geagte medewerker

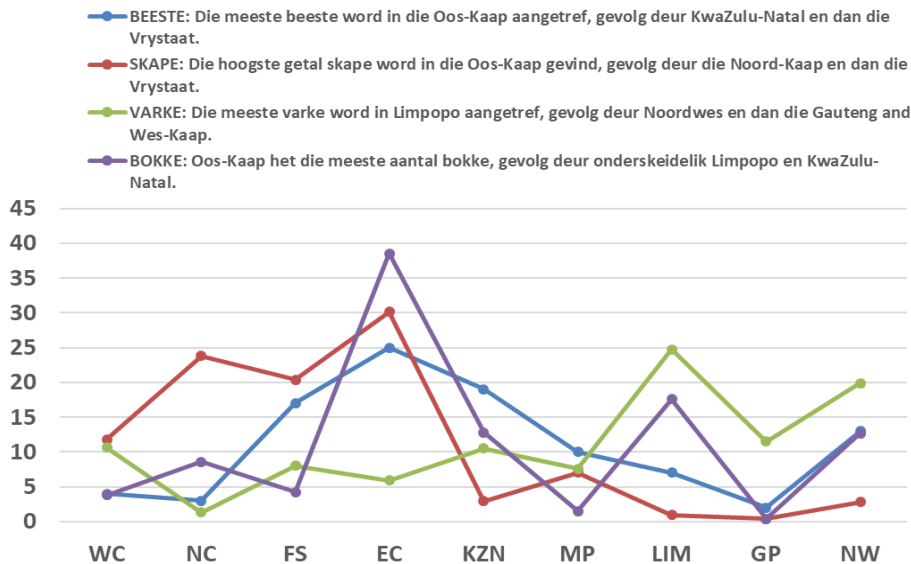
Augustus 2021

Geskatte Veegetalle in die RSA (Augustus 2020 en Mei 2021)

Provinsie	Beeste		Skape		Varke		Bokke	
	Aug-20	Mei-21	Aug-20	Mei-21	Aug-20	Mei-21	Aug-20	Mei-21
	Duisende							
Wes-Kaap	466	467	2 545	2 502	144	141	202	197
Noord-Kaap	419	416	5 182	5 059	17	17	448	442
Vrystaat	2 054	2 019	4 330	4 340	109	106	215	213
Oos-Kaap	3 050	3 046	6 513	6 401	81	78	1 991	1 971
KwaZulu-Natal	2 380	2 316	628	607	143	139	662	653
Mpumalanga	1 248	1 235	1 527	1 493	104	101	77	76
Limpopo	860	845	199	192	329	328	902	899
Gauteng	246	246	84	82	155	153	21	19
Noordwes	1 576	1 548	596	589	275	265	651	648
Totaal	12 298	12 138	21 605	21 265	1 357	1 328	5 170	5 118

Die bees-, skaap-, vark- en bokgetalle het onderskeidelik afgeneem met 1.30%, 1.57%, 2.13% en 1.01% vanaf Augustus 2020 tot Mei 2021.

PROVINSIE PERSENTASIE



NOTAS (MAR 2021 – MEI 2021)

Reën:

Gemiddeld is normale reënval gedurende die tydperk aangemeld. Oorstromings aangemeld weens sikloon beskadigde infrastruktuur in FS en KZN.

Vee:

Veetoestand was redelik tot goed gedurende die tydperk. GP het uitbrake van Afrika-varkoors ondervind, en veeverlies in KZN was as gevolg van weerlig en bosluisoorgedraagde siektes. Boere word steeds aangeraai om die benodigde voorraad tot kapasiteitsvlakke te verminder.

Weiding / veld:

Die omstandighede was gemiddeld redelik as gevolg van lae reënval gedurende die tydperk. Veldbrande is in FS en KZN aangemeld.

Die Departement waardeer die volgehoue deelname en ondersteuning van dataverskaffers.

Maak asseblief seker dat die vraelys vir die volgende siklus voltooi is en gestuur word aan Livestock@dalrrd.gov.za of Selebogol@dalrrd.gov.za voor **29 Oktober 2021**. Alternatiewelik, stuur dit deur die koevert soos voorsien.

per pro. Direkteur: Statistiek en Ekonomiese Analise



Newsletter: National Livestock Statistics

From: Baldwin Netshifhephe **Directorate:** Statistics and Economic Analysis
Tel: 012 319 8043 **Fax:** 012 319 8035/1 **E-mail:** BaldwinN@daff.gov.za / SelebogoL@daff.gov.za

Dear Co-operator

AUG 2021

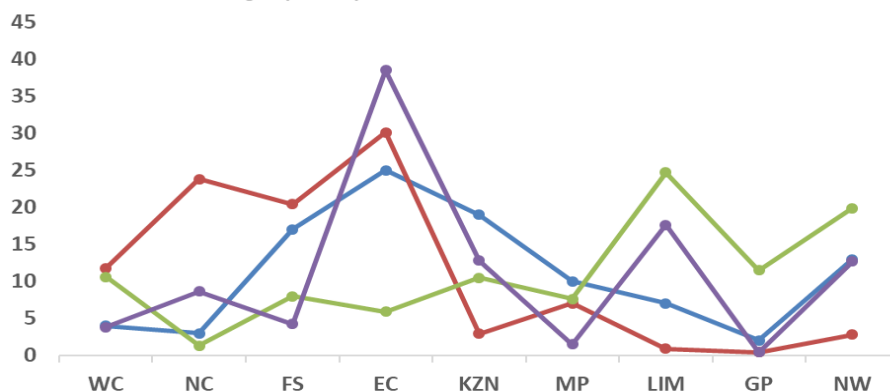
Estimated Livestock Numbers in the RSA (August 2020 and May 2021)

Province	Cattle		Sheep		Pigs		Goats	
	Aug-20	May-21	Aug-20	May-21	Aug-20	May-21	Aug-20	May-21
Thousands								
Western Cape	466	467	2 545	2 502	144	141	202	197
Northern Cape	419	416	5 182	5 059	17	17	448	442
Free State	2 054	2 019	4 330	4 340	109	106	215	213
Eastern Cape	3 050	3 046	6 513	6 401	81	78	1 991	1 971
KwaZulu-Natal	2 380	2 316	628	607	143	139	662	653
Mpumalanga	1 248	1 235	1 527	1 493	104	101	77	76
Limpopo	860	845	199	192	329	328	902	899
Gauteng	246	246	84	82	155	153	21	19
North West	1 576	1 548	596	589	275	265	651	648
Total	12 298	12 138	21 605	21 265	1 357	1 328	5 170	5 118

The numbers for cattle, sheep, pigs and goats decreased by approximately 1.30%, 1.57%, 2.13% and 1.01% respectively between August 2020 and May 2021.

PROVINCIAL PERCENTAGES

- CATTLE: Eastern Cape has the highest percentage of cattle, followed by KwaZulu-Natal and Free State.
- SHEEP: The highest percentage of sheep is in Eastern Cape, followed by Northern Cape and Free State.
- PIGS: Pigs are largely in Limpopo, followed by North West, Gauteng and Western Cape.
- GOATS: Eastern Cape has the highest number of goats, with Limpopo and KwaZulu-Natal following respectively.



NOTES (MAR 2021 – MAY 2021)

RAIN:

On average, below to normal rainfall was reported over the period. Reported flooding due to cyclone damaged infrastructure in FS and KZN.

LIVESTOCK:

Livestock condition was reasonable to good over the period. GP experienced outbreaks of African Swine Fever, and livestock loses in KZN were due to lightning and tick-borne diseases. Farmers continue to be advised in reducing stock needed to capacity levels.

PASTURE/VELD:

Conditions were reasonable on average, due to low rainfall over the period. Veld fires were reported in FS and KZN.

The Department appreciates the continued participation and support from data providers.

Please, ensure the questionnaire for the next cycle is completed and emailed to Livestock@daff.gov.za or SelebogoL@dalrrd.gov.za before **29 October 2021**. Alternatively, send it through the envelope as provided.

per pro. Director: Statistics and Economic Analysis